



**For Immediate Release**

April 2, 2008

Contact:  
Aloha Pacific Federal Credit Union  
Contact: Mr. Kristopher Kono  
Phone: 539-0152  
Email: kris@kalanet.com

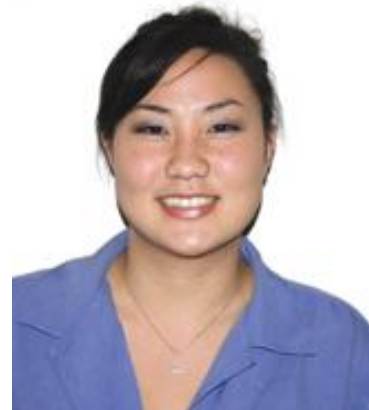
## **Aloha Pacific Federal Credit Union Promotes Shanese Kaneshiro to Waimalu Branch Supervisor**

HONOLULU—Aloha Pacific Federal Credit Union (Aloha Pacific) announces the promotion of Shanese Kaneshiro to Waimalu branch supervisor.

Kaneshiro will be responsible for the direct supervision of day-to-day operations and the training of all staff at their respective branches. She will coordinate staff work schedules and monitor performance to maintain the integrity and efficiency of the credit union.

Kaneshiro joined the credit union in Nov. 2001 as a concierge and worked her way up to senior branch sales associate at the Waimalu branch. She was recently named Aloha Pacific's 2007 employee of the year. Prior to the credit union, she was employed at Liberty House.

Kaneshiro is a graduate of McKinley High School.



### **About Aloha Pacific Federal Credit Union:**

Founded in 1936 by industrious city employees, Aloha Pacific FCU is the third largest credit union in Hawaii with more than \$430 million in assets. It has four branches and over 40 ATMs. Membership is open to employees of the City & County, members of the Hawaii Government Employees Association as well as other select employee groups (SEGs) and their immediate family. For additional information, please visit [www.kalanet.com](http://www.kalanet.com).

###